

ST. TERESA'S CHESS CLUB NEWSLETTER

Volume 2, Issue 15 ~ MAY 19, 2009

Visit our STCC website at www.stts.org under "Clubs & Activities"

general news ~

- **LAST CLUB MEETING & END OF YEAR PARTY = TODAY = MAY 19 – 3 to 5 pm – STTS SCIENCE LAB**
 - o I need help cooking pizzas, cutting cake, pouring drinks – **VOLUNTEERS, ANYONE ??** 😊 🍷
- **SEIRAWAN CHESS** – with the new Hawk and Elephant pieces – was introduced at the last meeting
- **Summer USCF Tournament Schedule** – is attached again; if you have interest in an event, please call & we may go, too!
- **KIDS !!** – work on your **PUZZLES** like we did last meeting – this will help you see things easier in your games !!
 - o Figure out what squares around the king are covered, then determine which piece can attack the rest
 - o Get more puzzles from the old newsletters at www.stts.org under "Clubs and Activities"
 - o If you want, bring (or email) your answers to me, and I will let you know if you are right!

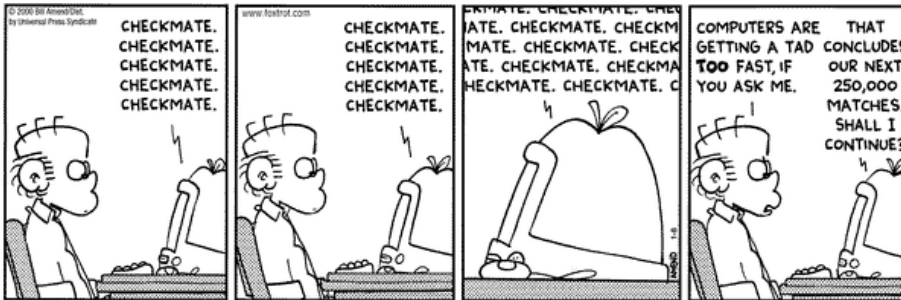
team tournament in reno vs hunsberger ~

- Sadly, our host cancelled this tournament due to problems with the facility.
- We will try again next school year, and perhaps there will be opportunities over the summer.

Rating updates ~ our top-6 rated players, through games played on May 5:

1. Ricky Frewert	1220	3. Nick Fischer	1040	5. Paul Honein	998
2. Riley Gruber	1087	4. Wyatt Cartier	1004	6. Stuart McElhaney	976

chess comic du jour & bonus puzzle ~ (from Chessville Weekly, v8, #12; answer in footer!)



BLACK to move and DRAW

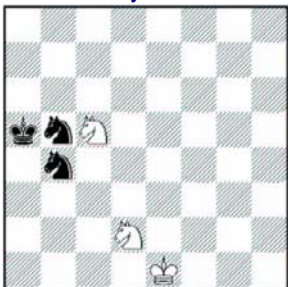
chess quote du jour ~

- "I am a great believer in **luck**, and I find that **the harder I work**, the **more I have** of it." - **Thomas Jefferson**

chess in history ~ When **John Quincy Adams** was President of the United States, he purchased an expensive ivory chess set and board with his own money and had this set in the White House. However, when he was running for re-election, his opponent, **Andrew Jackson**, claimed that Adams had wasted money and used public funds to buy gambling equipment (the chess set). I don't know if this affected the election in 1828, but Jackson won the popular vote and the electoral vote that year (won 178 electoral votes to 83 electoral votes for Adams).

chess trivia ~ Chess was the first sport to have a national sports organization in the United States. The American Chess Association was formed in 1857. Baseball was organized as a national sports a few years later.

chess puzzles of the week ~ Thanks to www.kidchess.com for the following:



2.15.1. WHITE to move & mate in 1



2.15.2. BLACK to move & mate in 1



2.15.3. WHITE to move & mate in 1



2.15.4. WHITE to move & mate in 1

For questions, comments or suggestions to this Newsletter, please feel free to call Rick Frewert at 775-450-6935, or via email at rfrewert@earthlink.net.

Chessville Answer: Black's king cannot move & is about to be checkmated via Rh7, but Black can force stalemate if he can sacrifice both Rooks: 41...Rh1+ 42.Kxh1 Re1+ 43.Kh2 Rh1+ 44.Kxh1 ½-½ Henry Bird - Berthold Englisch, London, 1883

 **ST. TERESA'S CHESS CLUB NEWSLETTER**  

VOLUME 2, ISSUE 15 ~ MAY 19, 2009

Visit our STCC website at www.stts.org under "Clubs & Activities"**uscf tournament schedule**

- For those interested, the following is a listing of the primary USCF sanctioned scholastic chess tournaments from now through September 2009. Call or email me for more info. I will be trying to go to LV and the MI Championship
- I have included the 4 primary areas within reasonable range of Carson City:
 - o Reno, Las Vegas, Sacramento and the Bay Area
- Note that the **Mechanics Institute** (MI) in SF is the oldest chess club in the US (1854) – a special place – website:
 - o <http://www.chessclub.org/index.php>
- “Quads” means a tournament with 4 person sections by similar club rating. You play the other 3 in your quad.
- “Swiss” is a popular tournament format for large fields, used for most open tournaments. Before the tournament, players (or teams) are ranked according to their ratings, and assigned seed numbers. In the first round, Players are paired according to their seeds. If there are ten players in a Swiss system, in the first round the number one seed will play the sixth seed, number two will play number seven, and so on. In following rounds, players are matched with opponents with the same or similar scores. A player and opponent can meet only once.

MAY

Fri.1-Sun.3	Annual CalChess State Scholastic Championships	San Jose
Sat. 9	California Capitol Regional Scholastic Tourn.	Folsom
Sat.16	Mechanics Institute Scholastic Quads	San Francisco
Sat. 23	Bay Area Chess Evening Scholastic Quads	San Jose
Sat. 23	California Capitol Scholastic Chess Tournament	Sacramento
Sat. 30	Let's Play Chess Quads	San Jose
Sun. 31	Cupertino Kids Quads	Cupertino

JUNE

Fri. 4	LV International Chess Festival – Scholastic Trophy Tournament	Las Vegas
Sat. 5 – Sun. 6	LV International Chess Festival – Susan Polgar World Open for Girls & Boys	Las Vegas
Sat. 6	Bay Area Chess Scholastic Swiss	San Jose
Sat. 6	Bay Area Chess Evening Scholastic Quads	San Jose
Sat. 20	Bay Area Chess Scholastic Swiss	San Jose
Sat. 20	Bay Area Chess Evening Scholastic Quads	San Jose
Sat. 27	Mechanics Institute Scholastic Quads	San Francisco

JULY

Sat. 11	Mechanics Institute Scholastic Championship	San Francisco
Sat. 18	Bay Area Chess Scholastic Swiss	San Jose
Sat. 18	Bay Area Chess Evening Scholastic Quads	San Jose

AUGUST

Sat. 15	Mechanics Institute Scholastic Quads	San Francisco
Sat. 22	Bay Area Chess Scholastic Swiss	San Jose
Sat. 22	Bay Area Chess Evening Scholastic Quads	San Jose

SEPTEMBER

Sat. 12	Mechanics Institute Scholastic Quads	San Francisco
Sat. 26	Bay Area Chess Scholastic Swiss	San Jose
Sat. 26	Bay Area Chess Evening Scholastic Quads	San Jose

For questions, comments or suggestions to this Newsletter,
please feel free to call Rick Frewert at 775-450-6935, or via email at rfrewert@earthlink.net.

Chessville Answer: Black's king cannot move & is about to be checkmated via Rh7, but Black can force stalemate if he can sacrifice both Rooks:
41...Rh1+ 42.Kxh1 Re1+ 43.Kh2 Rh1+ 44.Kxh1 ½-½ Henry Bird - Berthold Englisch, London, 1883